

J-Swoc Crawler

General specifications



J-Swoc is a powerful Jetting Crawler dedicated for shallow water cable works. This product is design to bury all kind cable or pipes up to 200mm diameters from the shore up to 100m. The J-Swoc is fully instrumented and avoids a burial by divers or jetting sledge with a high level of quality and efficiency.

Work capabilities

- Operations: shallow water burial, inspection, survey
- Total power: up to 420Kw (180Kw or 420Kw)
- Operating depth: from the beach to 100m
- Trenching depth: up to 3m (2m or 3m)
- Speed trenching: 200m/h typical speed
- Speed on tracks: 2500 m/h



Characteristics

Typical characteristics

- Dimensions: length 6m / Breadth 3.5m on tracks / height 1.7
- Weight on tracks: 6 tons in air / 0.8 tons in water
- (adjustable)
- Structure: tubular Stainless steel 316L
- Piping and fittings: stainless steel
- Biodegradable hydraulic oil

Power propulsion

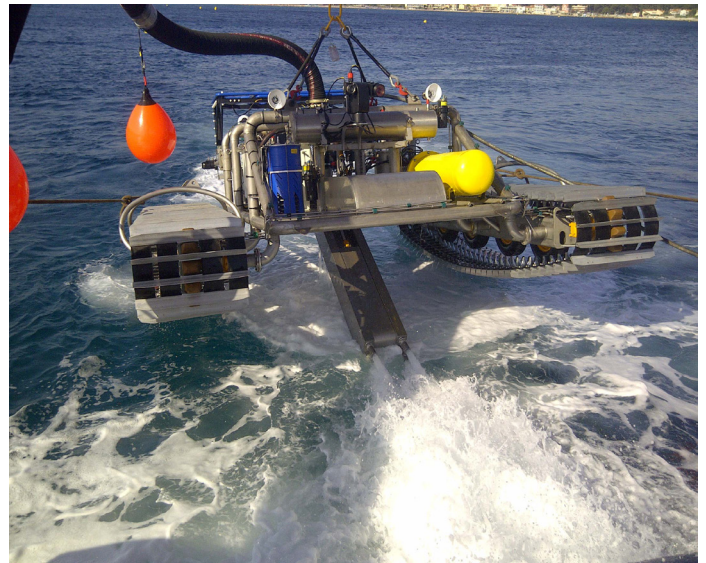
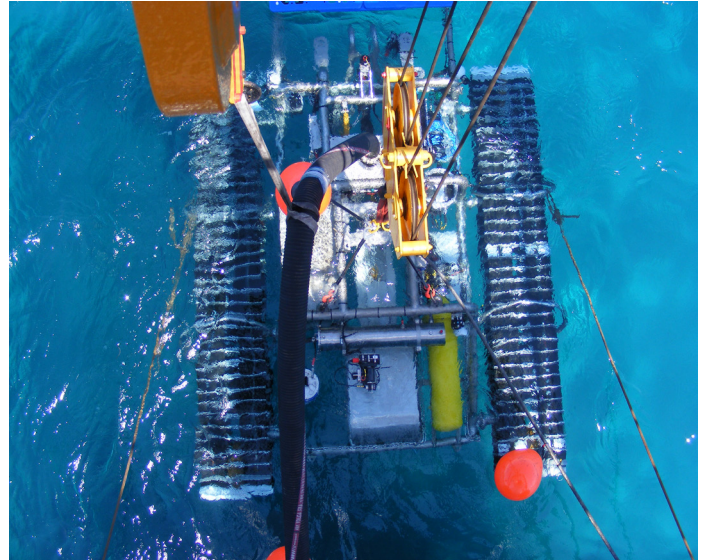
- Hydraulic power: 20kw
- Operating voltage: 6m or 440v/60hz
- Jetting power: up to 420Kw with submersible pumps
- 250Kw with pump on vessel's deck

Instrumentation and tools

- Video & cameras: 2 Pan & Tilt units & 1 wide angle
- Data: 2x485 / 2x232 / Ethernet link (2 or 6 data link in spare)
- Lighting: 6x250w spot lights
- Instrumentation: various (Sonar, altimeters, cable sensor)
- Navigation: acoustic positioning system / compass
- Piloting: Auto modes: heading, tracks
- Tracking: TSS 440 Cable Tracker
- Tools shop & spare: 1 container with a tools shop and spare part

Vessel Support

- Deployment system: crane
- Ship work deck: 200m²
- Operating team : 1 team leader and 6 technician
- Winch for jetting pipe (300m jetting pipe) with deck pump
- config



Additional information

This vehicle is able to work on different activities like Wind Farm, Shore End and all shallow water burial operation. J-Swoc has worked on the ACE Project in West Africa and on the Scottish Highlands and Islands project.