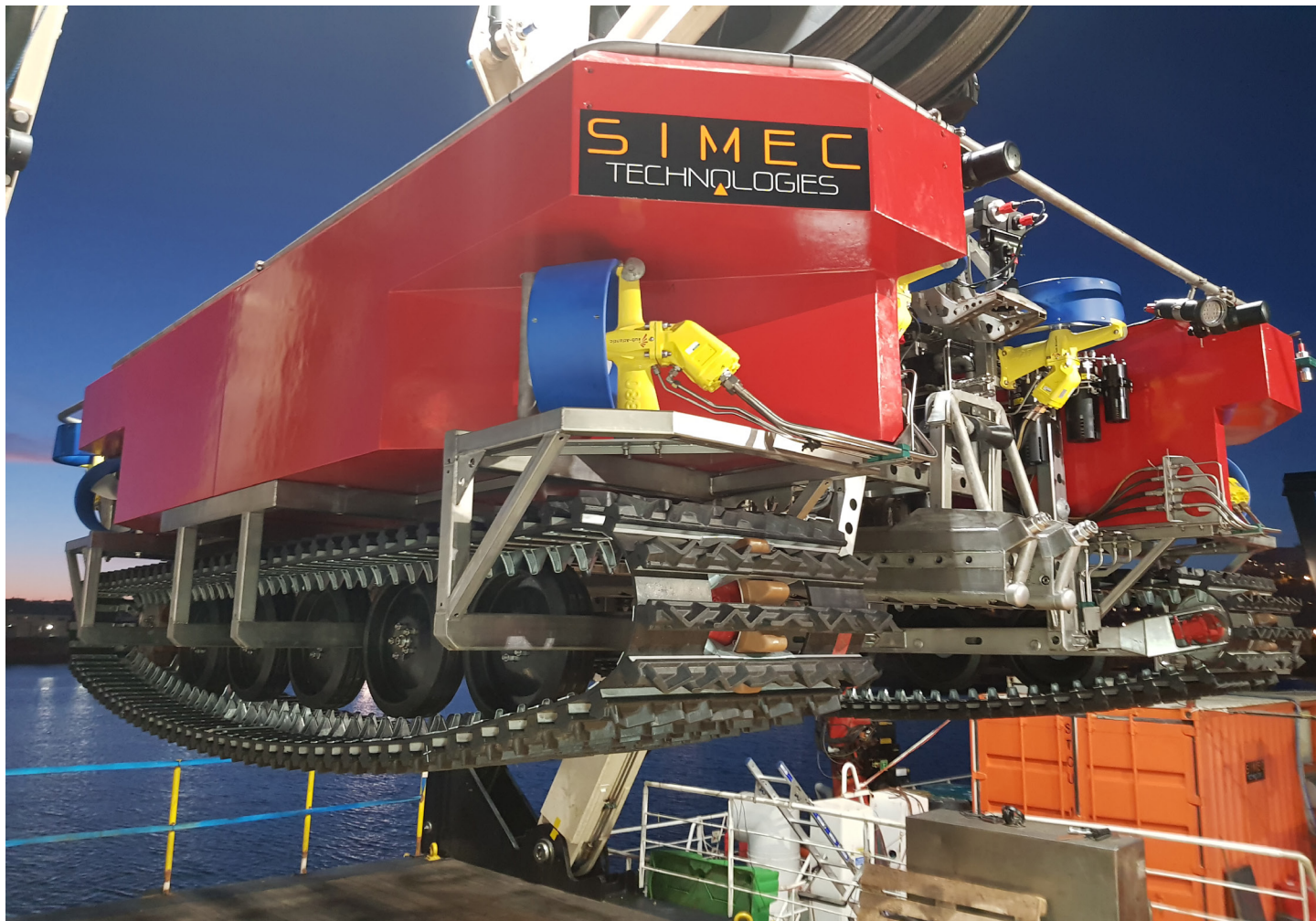


# SEAGMA ROV



**SEAGMA is a light and powerfull trenching ROV able to bury cables (power and telecom), O&G umbilicals and pipes. Its full instrumentation package allows also inspection and survey operations with a high level of performance. This trencher is customizable to meet the customer requirements and project specificities.**

## Work capabilities

- Operations : trenching (power and telecom cables, O&G umbilicals, pipes)
- Power : 600 Kw
- Operating range : up to 1,000 m
- Trenching depth : up to 3 m
- Trenching speed : up 300 m/hr
- Product size : up to 350 mm
- Speed on tracks : 2,500 m/hr

# Characteristics

## Typical characteristics

- **Dimensions** : length 6,5 m, breadth 4,5 m height 2 m
- **Weight in air** : 12,5 tons
- **Weight in water** : adjustable with thruster 0 to 800 kg
- **Structure** : Tubular stainless steel
- **Piping and fittings** : stainless steel
- **Power** : 600 KW
- **Power supply** : 1,000 KVA, 380 v, 50 hz
- **Biodegradable hydraulic oil**

## Instrumentation and tools

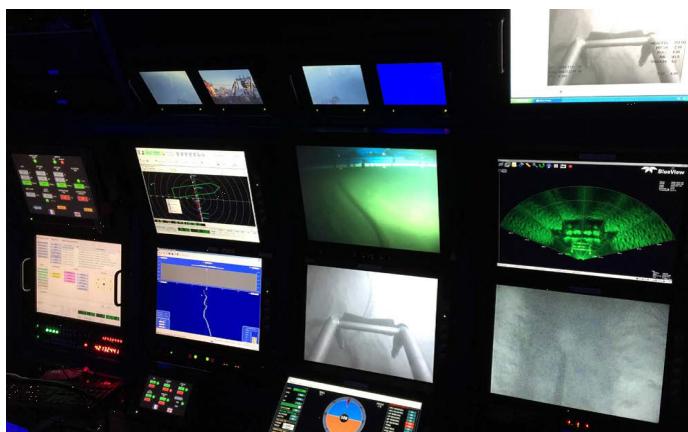
- **Camera** : up to 6 with 2 P&T units
- **Lighting** : 8 LED spot light
- **Instrumentation** : Blueview sonar, 2 altimeters, compass, stress gauge...
- **Auto mode** : auto heading, auto tracks
- **Positioning system** : Sonardyne mini ranger 2
- **Cable tracker** : TSS 440 and 350
- **Jetting tools** : rear tools (LP and HP) front tool (LP)
- **Jetting pump** : HP & LP (15 bars and 8 bars)

## Optionnal survey instrumentation

- **Fiber optic compass** : OCTANS
- **Profiler** : dual head cross profiler seaking
- **Bathymetry** : tritech

## Shipboard support

- **Deployment** : Crane or LARS 12 tons sea state 4
- **Clear Deck space** : 300 m2
- **Power supply** : 1,000 KVA
- **Operating team** : 8 people



# Additional information

All characteristics are adjustable and we customize our products in order to meet our customer's needs.